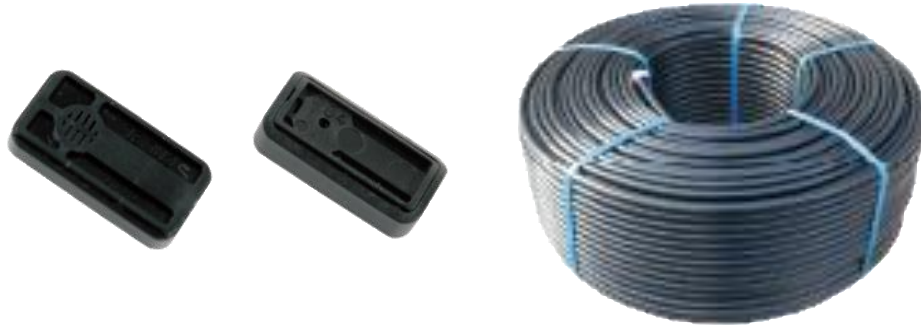


Water Line-PC



Application

perennial crop irrigation

Benefits

Excellent durability for multi year usage

superior durability

Less clogging

Pressure compensation

General Specification

Outside diameter:	15.8 mm
Wall Thickness:	1.0mm(39.37 mil)
Emitter Distance:	20~100 cm
Flow rate(1 bar):	2.0 L/H
Working Pressure:	1.0~4.0 bar
Filtration:	120 mesh
Roll Length:	200/400 m